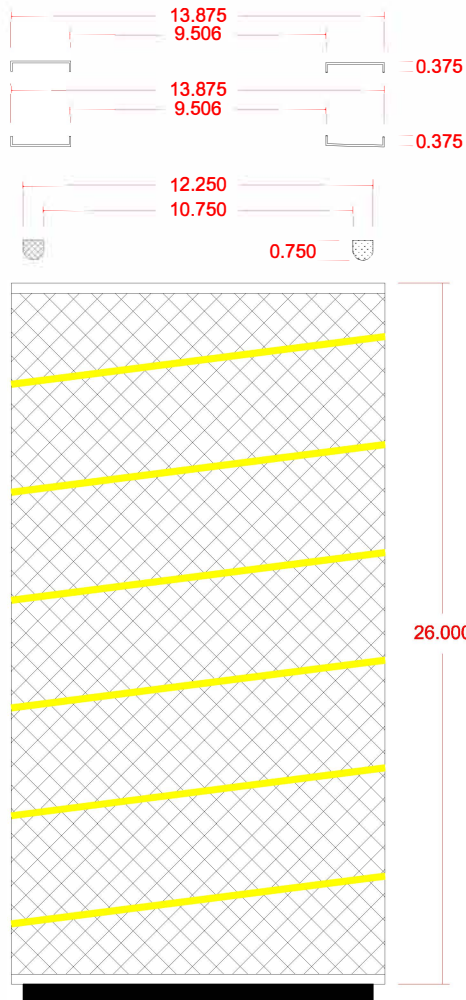




Air Cleaning Specialists, Inc.

## ACSF-250-FL



### CONSTRUCTION:

ELECTROPLATED GALVANIZED OPEN END CAP  
ELECTROPLATED GALVANIZED OPEN END CAP  
G-90 GALVANIZED EXPANDED METAL OUTER BODY  
G-90 GALVANIZED EXPANDED METAL INNER CORE  
230 SQUARE FEET 80/20 CELLULOSE SYNTHETIC BLENDED MEDIA  
EPDM RUBBER SEALING GASKET APPLIED TO ONE OPEN END CAP  
PVC SEALANT APPLIED TO BOTH ENDS  
HOT MELT ADHESIVE BEAD APPLIED OUTSIDE ONLY  
PACKAGED ONE PER CARTON  
WEIGHT: 16 POUNDS

### EFFICIENCY: (PER ASHRAE 52.2-2007)

TEST FLOW RATE: 650 CFM  
INITIAL RESISTANCE: 0.25 INCHES W.G.  
FINAL RESISTANCE: 4.00 INCHES W.G.  
E1 (%) COMPOSITE MINIMUM AVERAGE EFFICIENCY 0.30 - 1.00 MICRON: 20>E1  
E2 (%) COMPOSITE MINIMUM AVERAGE EFFICIENCY 1.0 - 3.0 MICRON: 65<E1  
E3 (%) COMPOSITE MINIMUM AVERAGE EFFICIENCY 3.0 - 10.0 MICRON: 85<E1  
MINIMUM EFFICIENCY REPORTING VALUE: MERV 11 @ 650 CFM